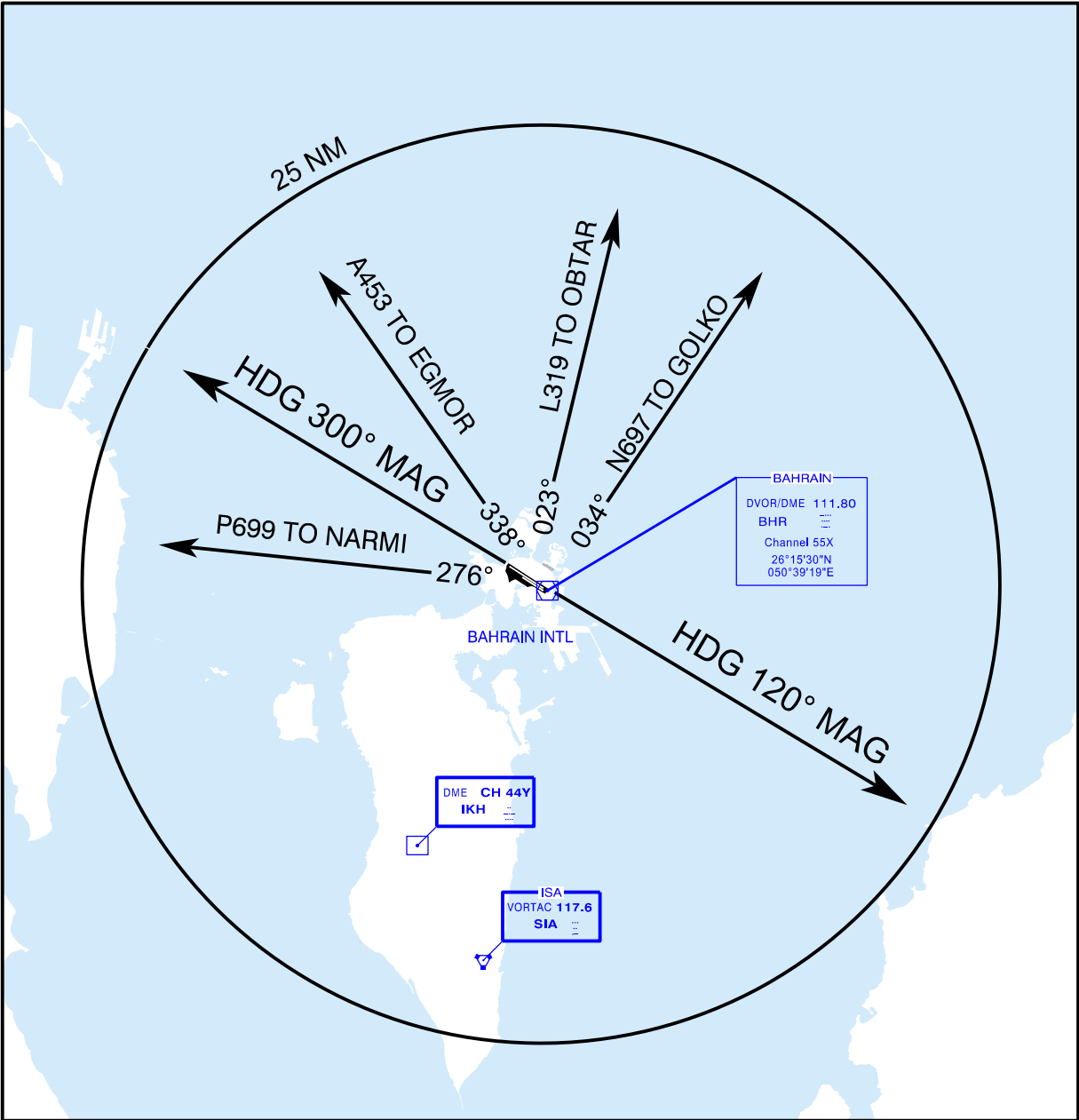


APP: 127.85 119.1 234.95
TWR: 118.5 296.025
SMC: 121.85
DATIS: 127.2

DEPARTURE CHART (RADAR)



Flights departing from Bahrain International Airport on a radar clearance and experiencing a total radio communication failure shall carry out the following procedures:-

In VMC:

Continue to fly in VMC and land at the nearest suitable aerodrome.

In IMC:

Maintain last assigned heading and flight level or altitude for a period of three minutes after departure or to a distance of 12 DME Bahrain whichever occurs earlier. Thereafter continue according to current flight plan by routing direct to the first en-route reporting point and climbing to the last acknowledged en-route flight level cleared by ATC.

Amendment : RWY 12L/30R MAG BRG Amended.