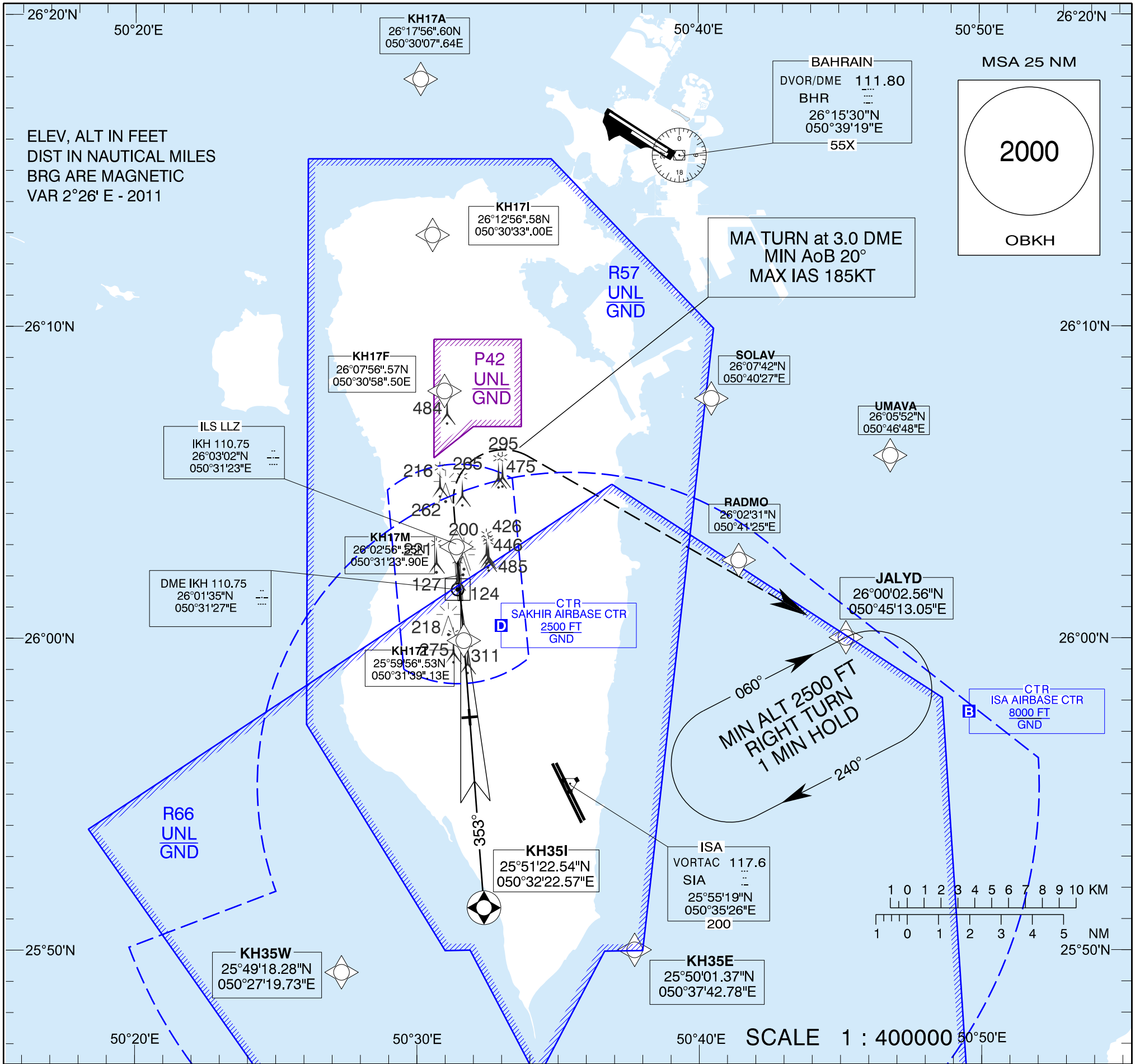


**INSTRUMENT APPROACH CHART - ICAO**

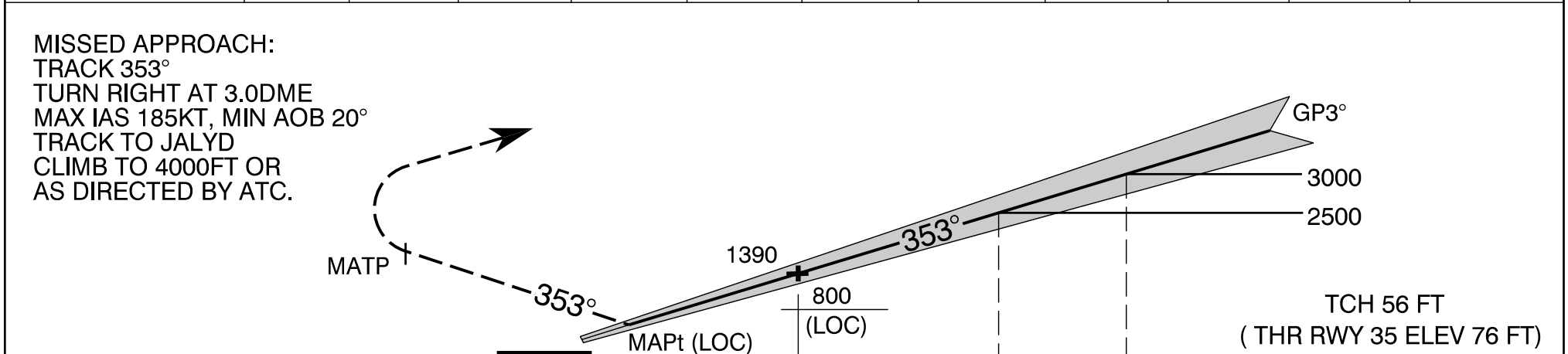
AERODROME ELEV 76 ft  
 HEIGHTS RELATED TO THR RWY 35 - ELEV

SAKHIR TOWER : 118.15  
 ISA APPROACH : 124.95  
 ACC BAH WEST : 125.050  
 ACC BAH EAST : 132.125  
 BAH VOLMET : 128.800

**BAHRAIN / SAKHIR AIRBASE (OBKH)  
 ILS/DME RWY 35  
 ALL ACFT CATEGORIES**



|                   |     |     |     |      |      |      |      |      |      |      |
|-------------------|-----|-----|-----|------|------|------|------|------|------|------|
| DME DIST          | 0.8 | 1   | 2   | 3    | 4    | 5    | 6    | 7    | 7.5  | 9    |
| ALT (3°APCH PATH) | 320 | 390 | 710 | 1040 | 1360 | 1690 | 2010 | 2340 | 2500 | 3000 |



|                    |     |     |     |     |     |
|--------------------|-----|-----|-----|-----|-----|
| NM BY DME          | 3.0 | 0.8 | 4.1 | 7.5 | 9.0 |
| NM FROM RWY 35 THR | 0   | 0.6 | 3.9 | 7.3 | 8.8 |

| CATEGORY    | A              | B         | C | D |
|-------------|----------------|-----------|---|---|
| S-I ILS/DME |                | 320 (244) |   |   |
| S-I LOC/DME |                | 570 (494) |   |   |
| CIRCLING    | NOT AUTHORISED |           |   |   |
| ALTERNATE   |                |           |   |   |

**NOTES**

- MISSED APPROACH MAX IAS 185KTS, MA TURN MIN AoB 20°
- ACFT MAY BE RADAR VECTORED TO IAF
- HOLDING AT JALYD MAX IAS 230KT

Amendment: OBBI DVOR/DME Re-located with New FREQ/IDENT & MAG VAR Value Updated.