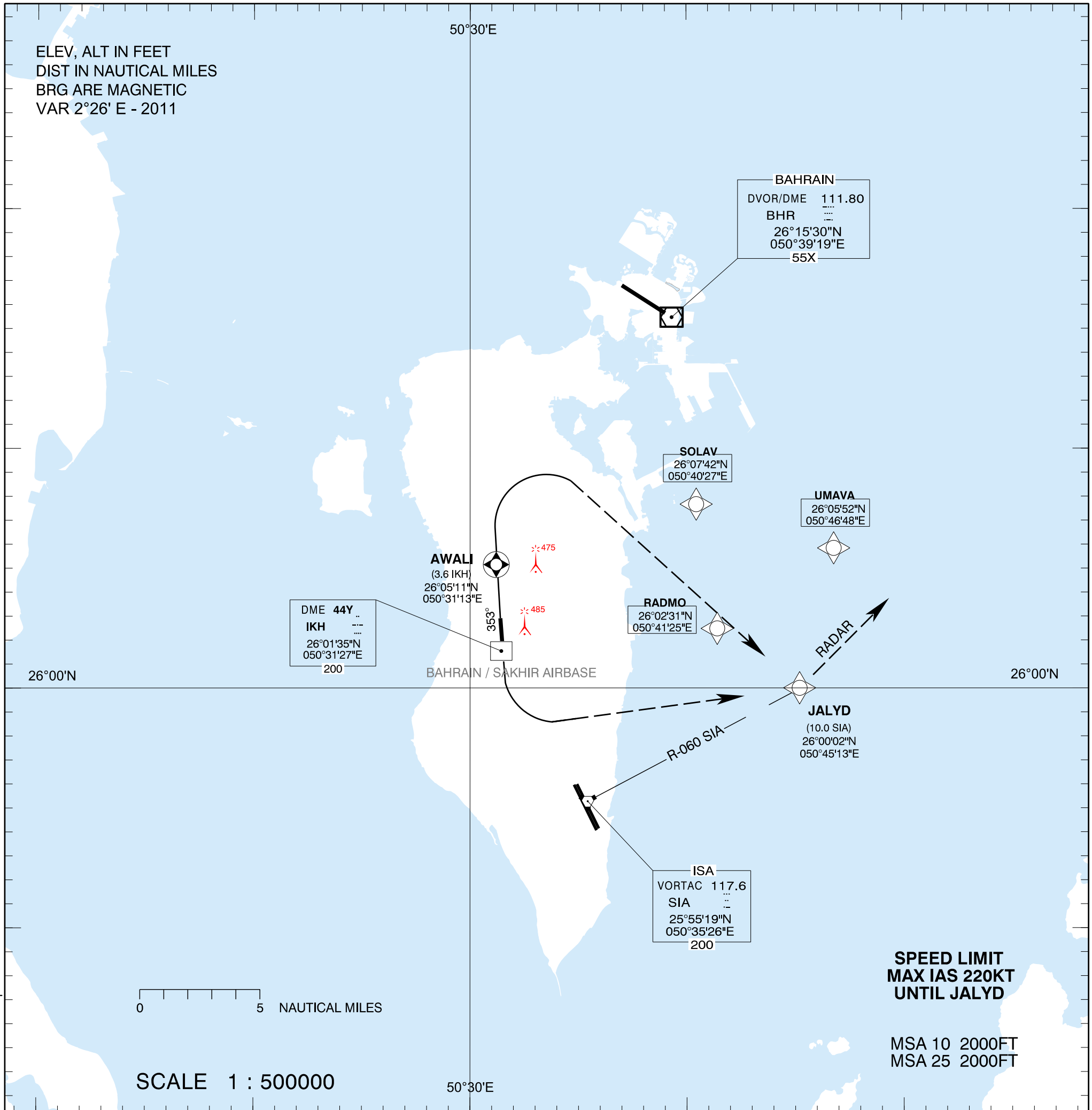


**STANDARD DEPARTURE CHART -
INSTRUMENT (SID) - ICAO**

SAKHIR TOWER: 118.15
 ISA DEPARTURE: 124.95
 ACC BAHRAIN WEST: 125.050
 ACC BAHRAIN EAST: 132.125
 BAHRAIN VOLMET: 128.800

**Bahrain, SAKHIR AIRBASE (OBKH)
STANDARD INSTRUMENT DEPARTURE (SID)**



RWY 35

TRACK 353°
 MAX IAS 185 KTS
 AT EARLIEST OF 700 FT OR AWALI
 TURN RIGHT
 MIN AoB 20°
 CLIMB TO 4000FT
 TRACK TO JALYD
 When directed, contact Departure

RWY 17

TRACK 173°
 CLIMB TO 700 FT
 NOT BEFORE DER, TURN LEFT
 CLIMB TO 4000FT
 TRACK TO JALYD
 When directed, contact Departure

TRANSITION

RADAR: From JALYD, expect radar vectors to cleared route.

Amendment: OBBI DVOR/DME Re-located with New FREQ/IDENT & MAG VAR Value Updated.