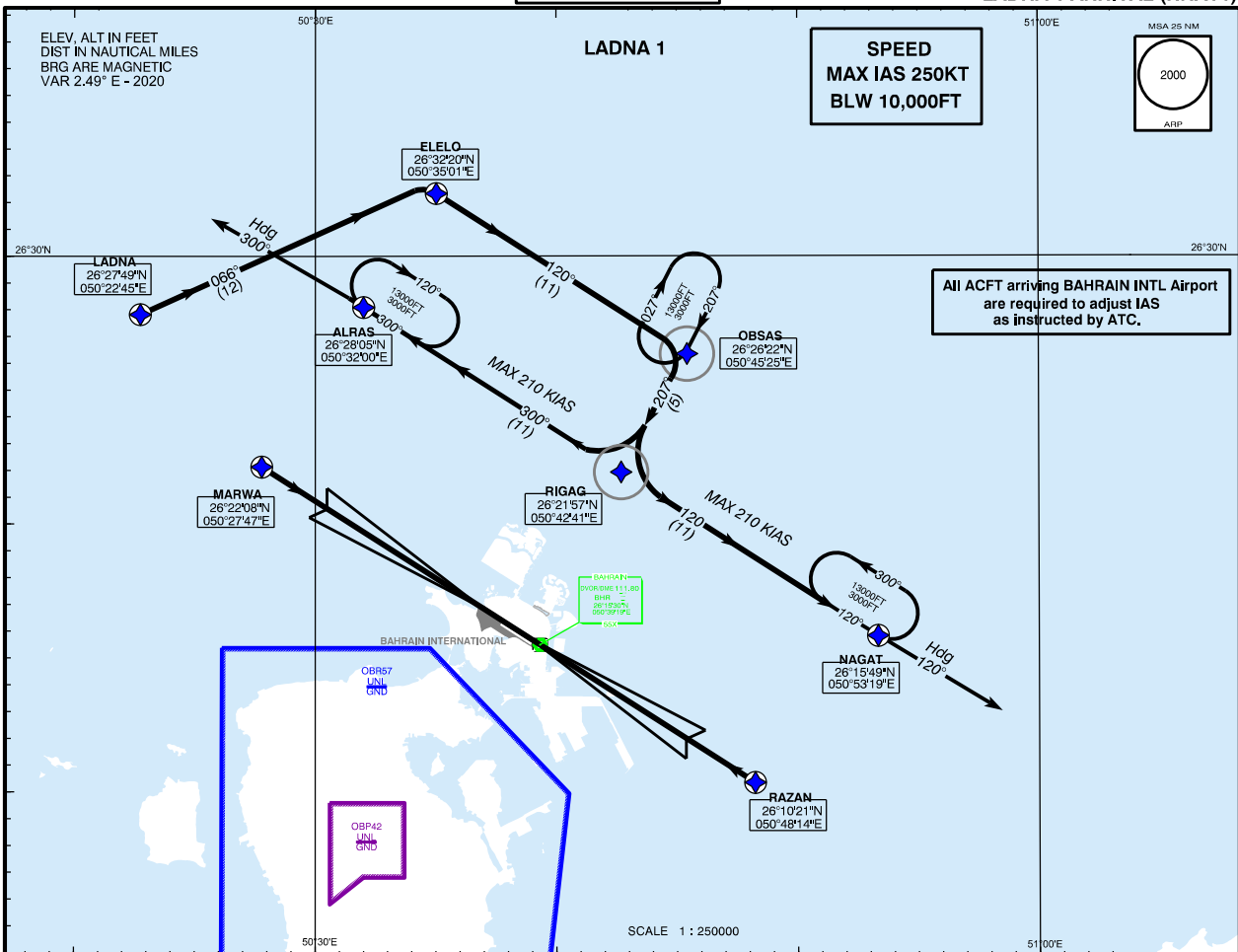


**STANDARD ARRIVAL CHART - INSTRUMENT (STAR) - ICAO**

TRANSITION ALTITUDE  
13000

APP: 127.85 119.1 234.95  
TWR: 118.5 296.025  
GMC: 121.85  
DLV: 121.90  
DATIS: 127.2

**BAHRAIN INTL (OBBI)  
RWY 12L/30R  
LADNA 1 ARRIVAL (RNAV1)**



**LADNA 1 ARRIVAL (RNAV1)**

RWY 12 L	RWY 30 R
FROM LADNA TRACK 066° TO ELELO	FROM LADNA TRACK 066° TO ELELO
TURN RIGHT TRACK 120° TO OBSAS	TURN RIGHT TRACK 120° TO OBSAS
TURN RIGHT TRACK 207° TO RIGAG	TURN RIGHT TRACK 207° TO RIGAG
TURN RIGHT TRACK 300° TO ALRAS MAX SPEED 210 KTS	TURN LEFT TRACK 120° TO NAGAT MAX SPEED 210 KTS
FROM ALRAS FLY H 300° EXPECT RADAR VECTORS TO FINAL	FROM NAGAT FLY H 120° EXPECT RADAR VECTORS TO FINAL

**GENERAL PROCEDURES**

- 1- Advise Bahrain ATC if unable to comply with the RNAV STAR.
- 2- Request STAR designator, current altitude, and cleared altitude on first contact with Bahrain Approach.
- 3- Maintain altitude assigned by ATC until cleared for the approach.
- 4- Expect to cross RIGAG between 5000-7000FT AMSL as instructed by ATC.
- 5- No Circling authorised BTN radials 180° and 260° Clockwise.
- 6- ALRAS is a Downwind Termination Waypoint (DTW) for the STAR to RWY 12.
- 7- NAGAT is a Downwind Termination Waypoint (DTW) for the STAR to RWY 30.

Amendment: MAG VAR Value Updated.