

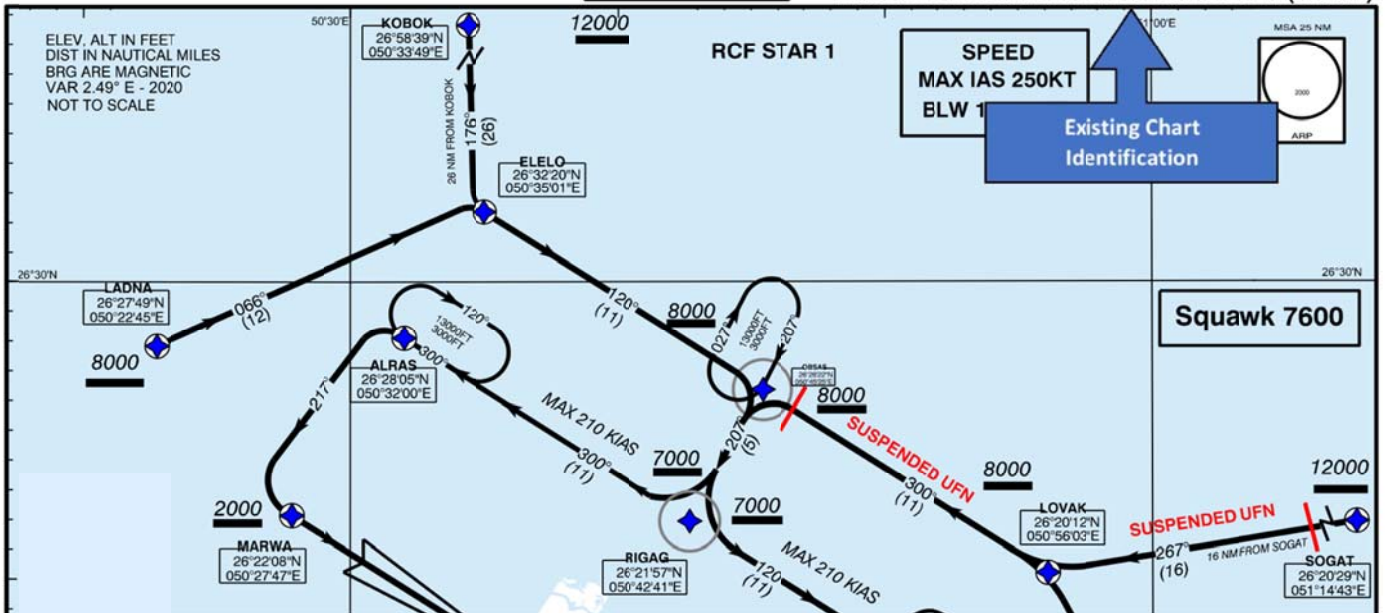
STANDARD ARRIVAL CHART - INSTRUMENT (STAR) - ICAO

TRANSITION ALTITUDE  
13000

APP: 127.85 119.1 234.95  
TWR: 118.5 296.025  
SMC: 121.85  
DLV: 121.90  
DATIS: 127.2

BAHRAIN INTL (OBBI)  
RWY 12L/30R

RADIO COMMUNICATION FAILURES STAR (RNAV1)



STANDARD ARRIVAL CHART - INSTRUMENT (STAR) - ICAO

TRANSITION ALTITUDE  
13000

APP: 127.85 119.1 234.95  
TWR: 118.5 296.025  
SMC: 121.85  
DLV: 121.90  
DATIS: 127.2

BAHRAIN INTL (OBBI)  
RWY 12L/30R

RADIO COMMUNICATION FAILURES STAR (RNP1)

