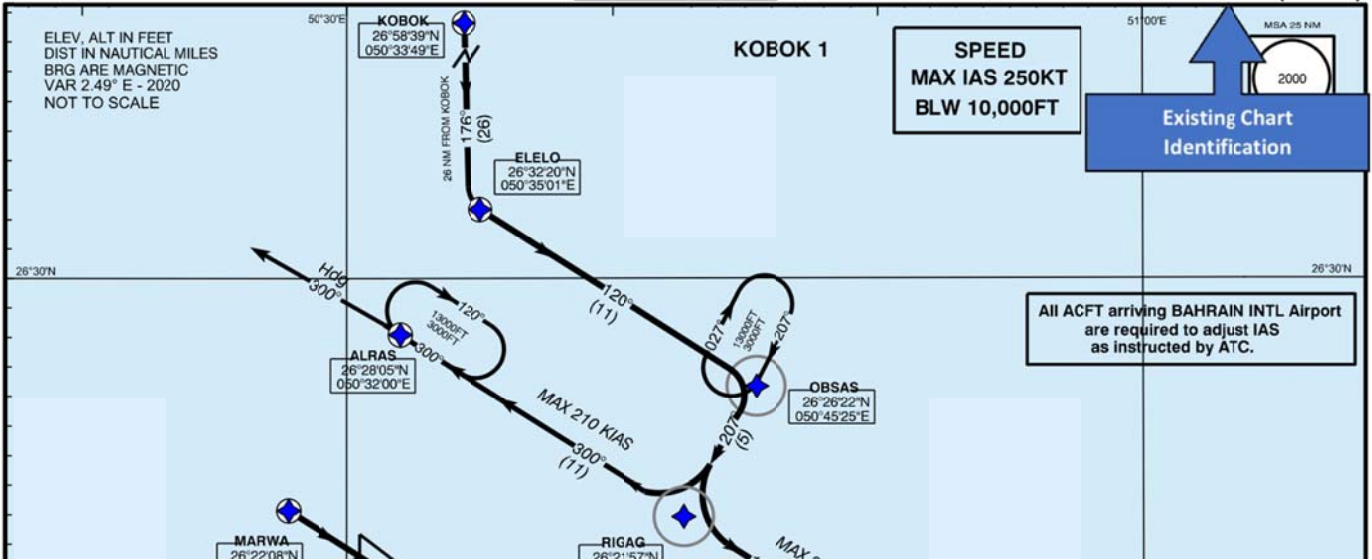


**STANDARD ARRIVAL CHART -
INSTRUMENT (STAR) - ICAO**

TRANSITION ALTITUDE
13000

APP:	127.85	119.1	234.95
TWR:	118.5	296.025	
GMC:	121.85		
DLV:	121.90		
DATIS:	127.2		

**BAHRAIN INTL (OBBI)
RWY 12L/30R
KOBOK 1 ARRIVAL (RNAV1)**



**STANDARD ARRIVAL CHART -
INSTRUMENT (STAR) - ICAO**

TRANSITION ALTITUDE
13000

APP:	127.85	119.1	234.95
TWR:	118.5	296.025	
GMC:	121.85		
DLV:	121.90		
DATIS:	127.2		

**BAHRAIN INTL (OBBI)
RWY 12L/30R
KOBOK 1 ARRIVAL (RNP1)**

