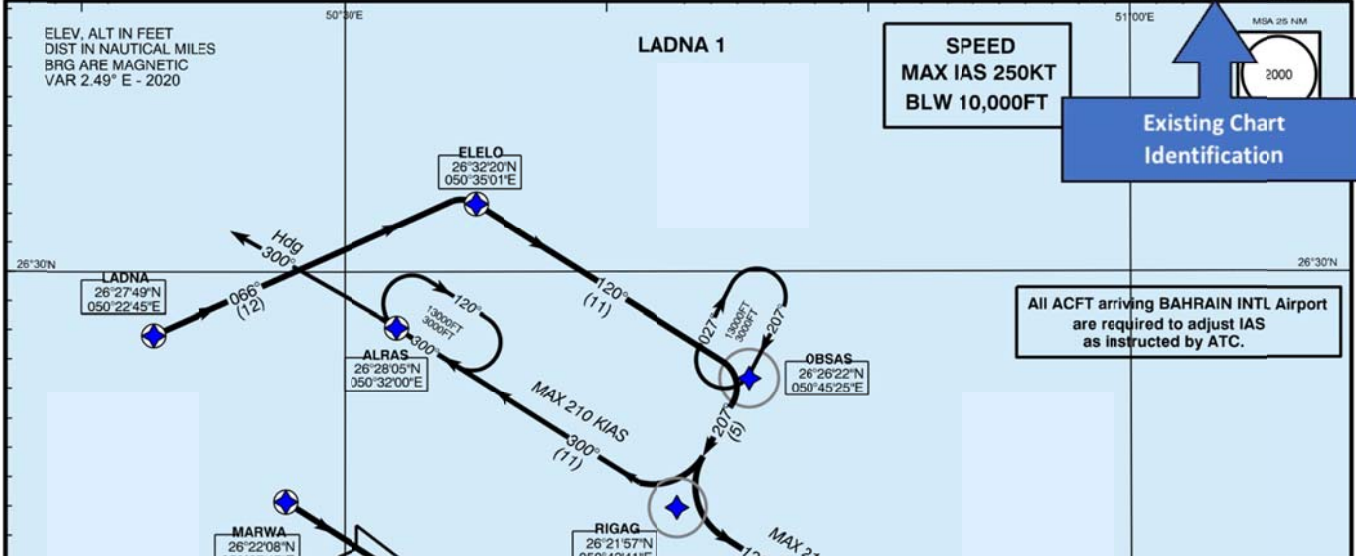


**STANDARD ARRIVAL CHART -
INSTRUMENT (STAR) - ICAO**

TRANSITION ALTITUDE
13000

APP: 127.85 119.1 234.95
TWR: 118.5 296.025
GMC: 121.85
DLV: 121.60
DATIS: 127.2

**BAHRAIN INTL (OBBI)
RWY 12L/30R
LADNA 1 ARRIVAL (RNAV1)**



**STANDARD ARRIVAL CHART -
INSTRUMENT (STAR) - ICAO**

TRANSITION ALTITUDE
13000

APP: 127.85 119.1 234.95
TWR: 118.5 296.025
GMC: 121.85
DLV: 121.90
DATIS: 127.2

**BAHRAIN INTL (OBBI)
RWY 12L/30R
LADNA 1 ARRIVAL (RNP1)**

