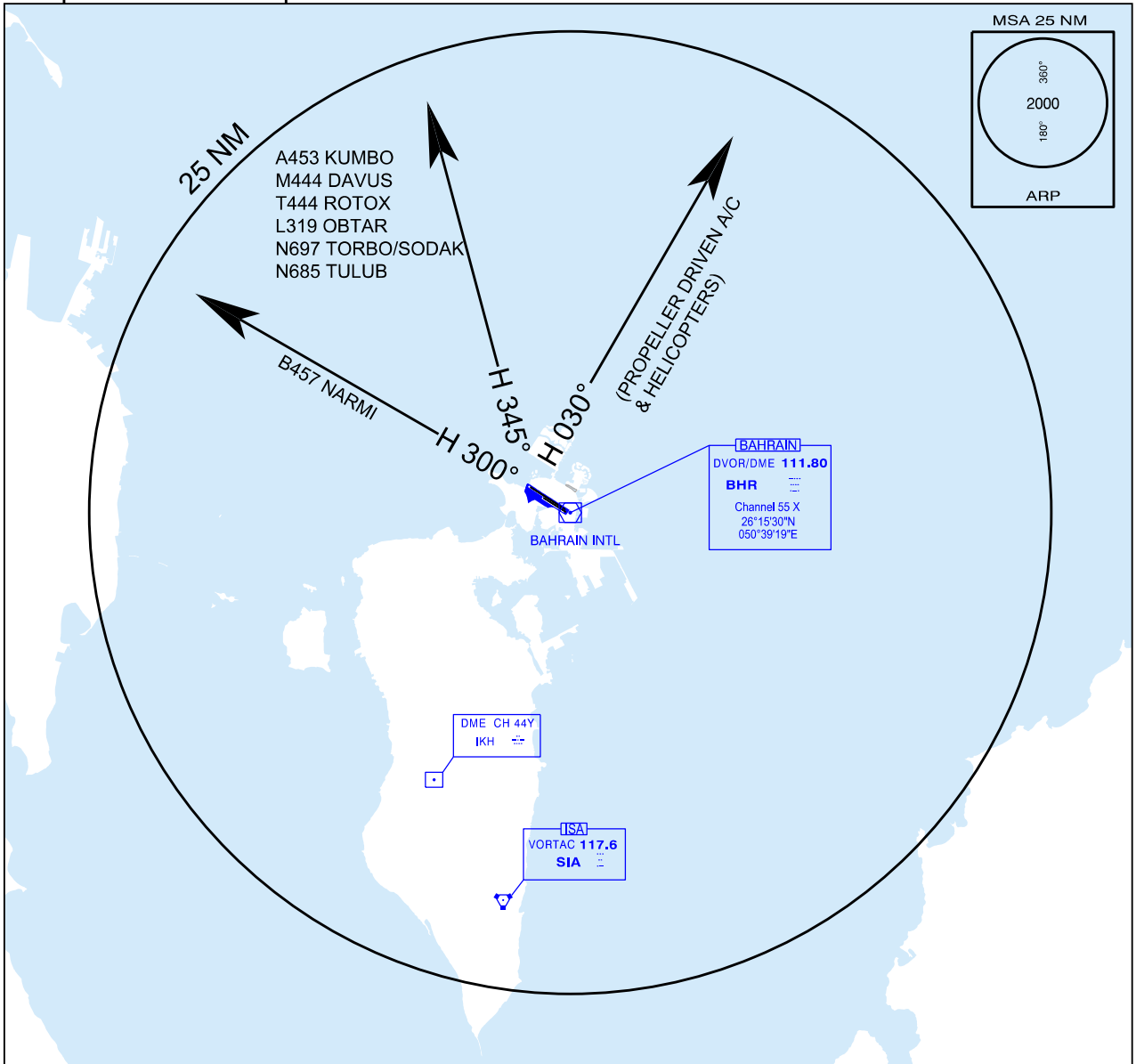


APP: 127.85 119.1 234.95
TWR: 118.5 296.025
GMC: 121.85
DLV: 121.90
ATIS: 127.2

DEPARTURE CHART (RADAR) RWY 30R



Unless otherwise instructed by ATC all jet departures
Heading 300° for FIR exit via B457 NARMI
Heading 345° for FIR exit via A453 KUMBO, M444 DAVUS, T444 ROTOX, L319 OBTAR, N697 TORBO T872 DASUT,
N697 SODAK, P559 NALPO, N685 TULUB N685 TOSNA Climb ALT 4000' MSL.

Unless otherwise instructed by ATC all helicopter or propeller driven aircraft
Heading 300° for FIR exit via B457 NARMI
H 030° for FIR exit via A453 KUMBO, M444 DAVUS, T444 ROTOX, L319 OBTAR, N697 TORBO T872
DASUT, N697 SODAK, P559 NALPO, N685 TULUB N685 TOSNA Climb ALT 3000' MSL.

Departure Frequency 119.100 when instructed by ATC

Flights departing Bahrain International Airport on a radar clearance and experiencing a total radio cimmunication failure shall carry out the following procedures:

In VMC:
Continue to fly in VMC and land at the nearest suitable aerodrome.

In IMC:
Maintain last assigned heading and flight level or altitude for a period of three mnutes after departure or to a distance of 12 DME Bahrian whichever occurs earlier. Thereafter continue according to current flight plan by routing direct to the first en-route reporting point and climbing to the last acknowledged en-route flight level cleared by ATC.