

RADAR MINIMUM ALTITUDE CHART - ICAO

**AERODROME ELEV 8 FT
TRANSITION ALTITUDE 13000 FT**

APP: 127.85 119.1 234.95
TWR: 118.5 121.851
GMC: 121.85
DLV: 121.90
ATIS: 127.2

BAHRAIN/Intl(OBBI)

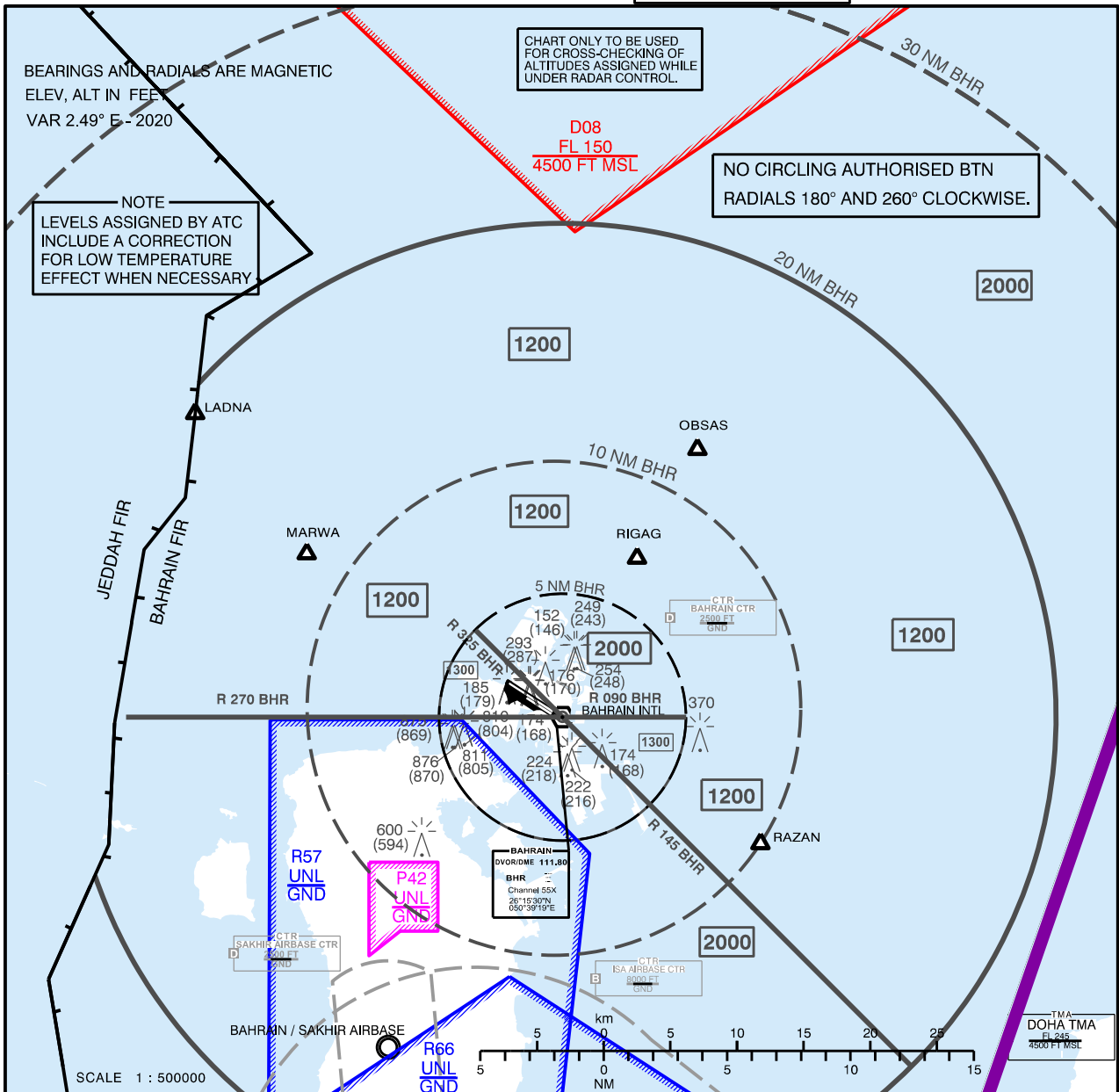
BEARINGS AND RADIALS ARE MAGNETIC
ELEV, ALT IN FEET
VAR 2.49° E - 2020

CHART ONLY TO BE USED FOR CROSS-CHECKING OF ALTITUDES ASSIGNED WHILE UNDER RADAR CONTROL.

**D08
FL 150
4500 FT MSL**

NO CIRCLING AUTHORISED BTN RADIALS 180° AND 260° CLOCKWISE.

NOTE
LEVELS ASSIGNED BY ATC INCLUDE A CORRECTION FOR LOW TEMPERATURE EFFECT WHEN NECESSARY



NOTE: The minimum levels shown are based upon the correct QNH being used.

LEGEND
ATC RADAR CONTROL
MINIMUM ALT IN FEET 1200

COM FAILURE
- SET TRANSPONDER CODE 7600.
- FOLLOW COM FAILURE PROCEDURE ON RELEVANT SID OR STAR.

Amendment: MAG VAR value updated.