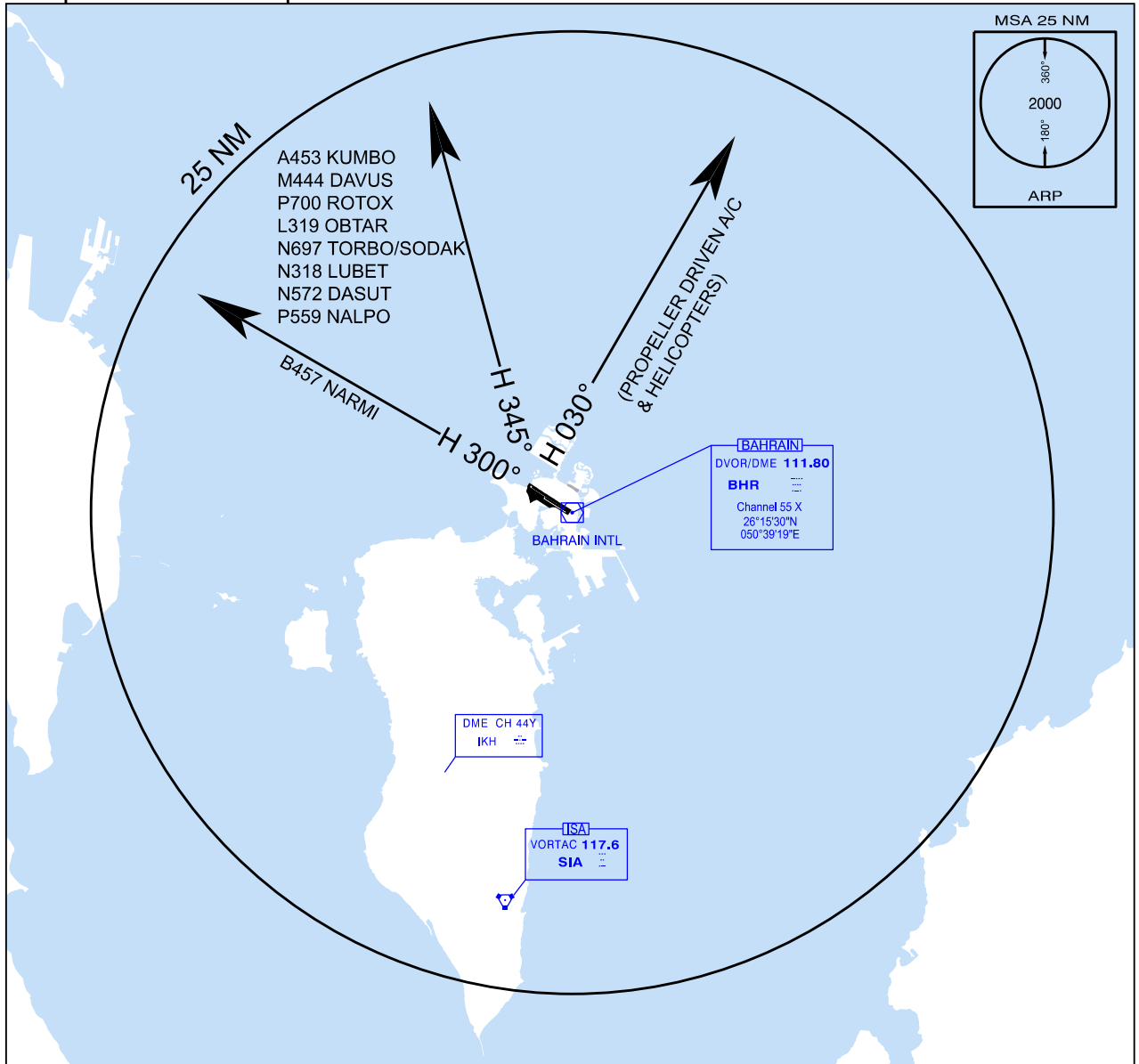


APP: 127.85 119.1 234.95
 TWR: 118.5 296.025
 GMC: 121.85
 DLV: 121.90
 ATIS: 127.2

DEPARTURE CHART (RADAR) RWY 30R

BAHRAIN Intl (OBBI)



Unless otherwise instructed by ATC all jet departures
 Heading 300° for FIR exit via B457 NARMI
 Heading 345° for FIR exit via A453 KUMBO, M444 DAVUS, P700 ROTOX, L319 OBTAR, N697 TORBO N572 DASUT, N697 SODAK, P559 NALPO, N318 LUBET Climb ALT 4000' MSL.

Unless otherwise instructed by ATC all helicopter or propeller driven aircraft
 Heading 300° for FIR exit via B457 NARMI
 H 030° for FIR exit via A453 KUMBO, M444 DAVUS, P700 ROTOX, L319 OBTAR, N697 TORBO N572 DASUT, N697 SODAK, P559 NALPO, N685 TULUB N685 TOSNA Climb ALT 3000' MSL.

Departure Frequency 119.100 when instructed by ATC

Flights departing Bahrain International Airport on a radar clearance and experiencing a total radio communication failure shall carry out the following procedures:

In VMC:
 Continue to fly in VMC and land at the nearest suitable aerodrome.

In IMC:
 Maintain last assigned heading and flight level or altitude for a period of three minutes after departure or to a distance of 12 DME Bahrian whichever occurs earlier. Thereafter continue according to current flight plan by routing direct to the first en-route reporting point and climbing to the last acknowledged en-route flight level cleared by ATC.

Amendment: In H345° N685 TULUB replaced with N318 LUBET.